



CHILDREN & LEARNING OVERVIEW & SCRUTINY COMMITTEE AGENDA

7.30 pm

Thursday
20 September 2012

Town Hall

Members 14: Quorum 6

COUNCILLORS:

Sandra Binion (Chairman)
Gillian Ford (Vice-Chair)
Nic Dodin

Robby Misir
Pat Murray
Frederick Thompson

Peter Gardner
Keith Wells
Melvin Wallace

CO-OPTED MEMBERS:

**Statutory Members
representing the Churches**

Phillip Grundy, Church of
England
Jack How, Roman Catholic
Church

**Statutory Members
representing parent
governors**

Julie Lamb, Special Schools
Anne Ling, Primary Schools
Garry Dennis, Secondary
Schools

Non-voting members representing local teacher unions and professional associations:
Margaret Cameron (NAHT), Bev Whitehead (NUT), Keith Passingham, NASUWT

For information about the meeting please contact:

**Sean Cable 01708 432436
sean.cable@haverling.gov.uk**

What is Overview & Scrutiny?

Each local authority is required by law to establish an overview and scrutiny function to support and scrutinise the Council's executive arrangements. Each overview and scrutiny committee has its own remit as set out in the terms of reference but they each meet to consider issues of local importance.

They have a number of key roles:

1. Providing a critical friend challenge to policy and decision makers.
2. Driving improvement in public services.
3. Holding key local partners to account.
4. Enabling the voice and concerns of the public.

The committees consider issues by receiving information from, and questioning, Cabinet Members, officers and external partners to develop an understanding of proposals, policy and practices. They can then develop recommendations that they believe will improve performance, or as a response to public consultations.

Committees will often establish Topic Groups to examine specific areas in much greater detail. These groups consist of a number of Members and the review period can last for anything from a few weeks to a year or more to allow the Members to comprehensively examine an issue through interviewing expert witnesses, conducting research and site visits. Once the topic group has finished its work it will send a report to the Committee that created it and it will often suggest recommendations to the executive.

Terms of Reference

The areas scrutinised by the Committee are:

- School Improvement (BSF)
- Pupil and Student Services (including the Youth Service)
- Children's Social Services
- Safeguarding
- Adult Education
- 14-19 Diploma
- Scrutiny of relevant aspects of the LAA
- Councillor Calls for Action
- Social Inclusion

AGENDA ITEMS

1 APOLOGIES FOR ABSENCE AND ANNOUNCEMENT OF SUBSTITUTE MEMBERS

(if any) - receive.

2 DECLARATION OF INTERESTS

Members are invited to declare any interests in any of the items on the agenda at this point of the meeting. Members may still declare an interest in an item at any time prior to the consideration of the matter.

3 CHAIRMAN'S ANNOUNCEMENTS

The Chairman will announce details of the arrangements in case of fire or other events that might require the meeting room or building's evacuation.

4 MINUTES

To approve as a correct record the Minutes of the meetings of the Committee held on...and authorise the Chairman to sign them.

5 MULTI-AGENCY SAFEGUARDING HUB (MASH) (Pages 1 - 2)

6 TROUBLED FAMILIES (Pages 3 - 14)

7 FUTURE AGENDAS

Committee Members are invited to indicate to the Chairman, items within this Committee's terms of reference they would like to see discussed at a future meeting. Note: it is not considered appropriate for issues relating to individuals to be discussed under this provision.

8 URGENT BUSINESS

To consider any other item in respect of which the Chairman is of the opinion, by reason of special circumstances which shall be specified in the minutes, that the item should be considered at the meeting as a matter of urgency.

**Ian Buckmaster
Committee Administration &
Member Support Manager**

This page is intentionally left blank

OVERVIEW AND SCRUTINY COMMITTEE 20/09/2012

Subject Heading:	Multi-agency Safeguarding hub (MASH)
CMT Lead:	Sue Butterworth
Report Author and contact details:	Kathy Bundred
Policy context:	Children and Safeguarding

SUMMARY

The London Safeguarding Children Board, the Metropolitan Police, London Directors of Children's Services (ALDCS) and the Greater London Authority agreed in 2011 to take forward a London wide project bringing together partner agencies to work more closely together on information sharing. Poor information sharing has been a feature of many inquiries into child death tragedies including Peter Connelly in Haringey .

The London MASH programme has drawn on experience in London and elsewhere. Devon is generally recognised as the first council to have a multi-agency safeguarding hub in place with co-located social workers, police and health professionals. The Devon MASH was established in 2010 and was cited as an example of good practice in the Munro Report on Safeguarding Children.

In London Haringey brought together police with social workers and health professionals to address the poor inter-agency working that was identified by Ofsted and the Peter Connelly serious case review. Hackney has also had a co-located multi-agency arrangement in place for some time.

In Havering, agencies have been working closely together to establish a MASH in Mercury House. Progress has been very good. Although, Havering was not in the original first wave of MASH programmes, the police are now in Mercury House and our health partners are recruiting to their post in the multi-agency team.

RECOMMENDATIONS

- To note progress in establishing a multi-agency safeguarding hub.

REPORT DETAIL

IMPLICATIONS AND RISKS

Financial implications and risks:

Legal implications and risks:

Human Resources implications and risks:

Equalities implications and risks:

BACKGROUND PAPERS

OVERVIEW AND SCRUTINY COMMITTEE 20/09/2012

Subject Heading:

Troubled Families

CMT Lead:

Sue Butterworth

Report Author and contact details:

Kathy Bundred/ Sarah Thomas

Policy context:

Children's Services

SUMMARY

In May 2011 Havering Council and partner agencies agreed to commit resources to the Top 100 Families programme. This arose from the recognition there was a need to improve co-ordination and delivery of services to a number of families in the borough whose complex needs were often not well addressed despite a high level of spending by a number of local agencies.

In October 2011, the Department of Communities and Local Government announced the national Troubled Families Programme, whereby Government funding would be available to local authorities based on the likely prevalence of families with specific characteristics. Troubled Families were defined as households who:

- Are involved in crime and anti-social behaviour
- Have children not in school
- Have an adult on out of work benefits
- Cause high costs to the public purse.

The presentation to Overview and Scrutiny will describe how the local and national projects were merged and report on the work that has taken place to date and future plans.

RECOMMENDATIONS

- To note progress to date in the Troubled Families programme and for committee members to recommend and advise officers on future plans

REPORT DETAIL

See attached presentation. Sarah Thomas the Troubled Families Co-ordinator will be at committee present the work to date and consult members about future direction.

IMPLICATIONS AND RISKS

Financial implications and risks:

Legal implications and risks:

Human Resources implications and risks:

Equalities implications and risks:

BACKGROUND PAPERS

Presentation attached

Report from Louise Casey on Listening to Troubled Families

Scrutiny Committee

Troubled Families Update

20th September 2012

Top 100 Families

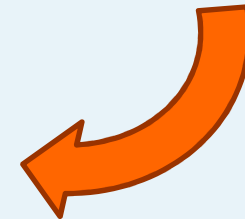
Nationally...

October 2011; DCLG announced intention to transform the lives of 120,000 families through national **TF programme**

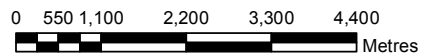
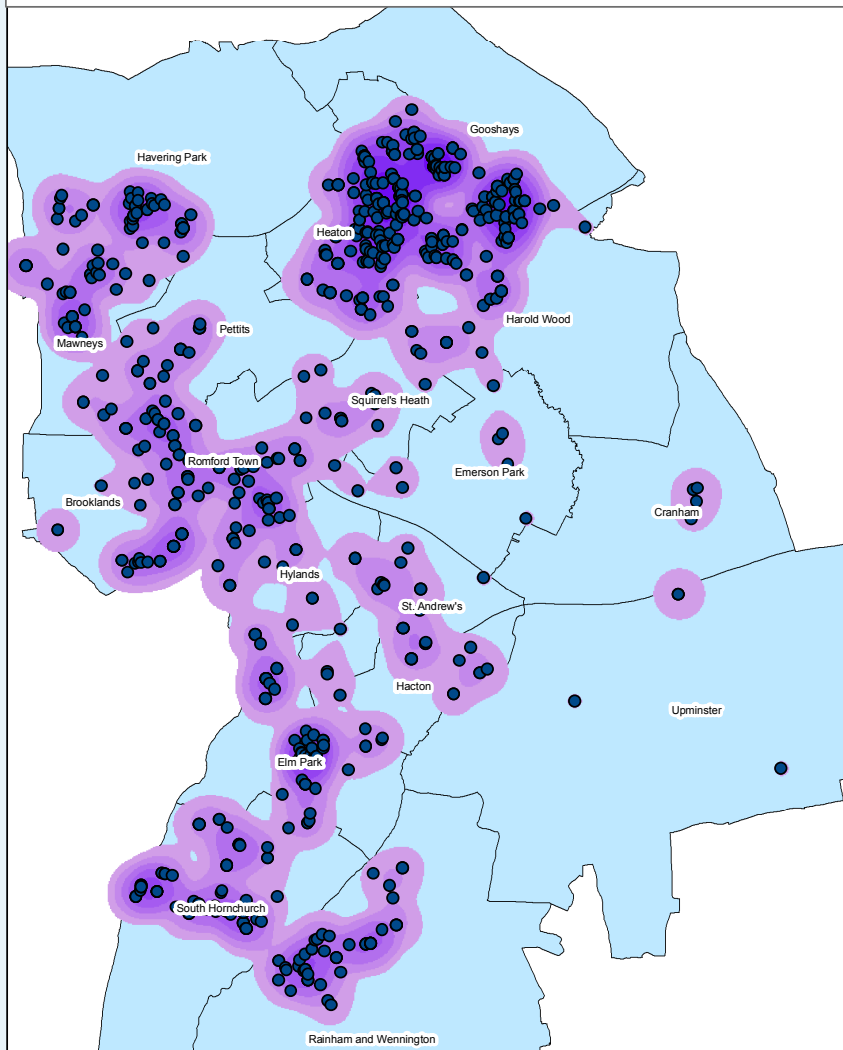


HAVERING'S TROUBLED FAMILIES PROGRAMME

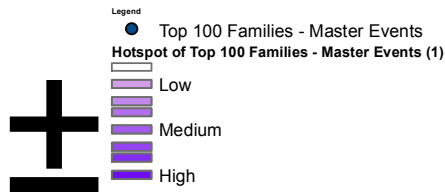
Merging the local and national projects



Top 100 families plotted

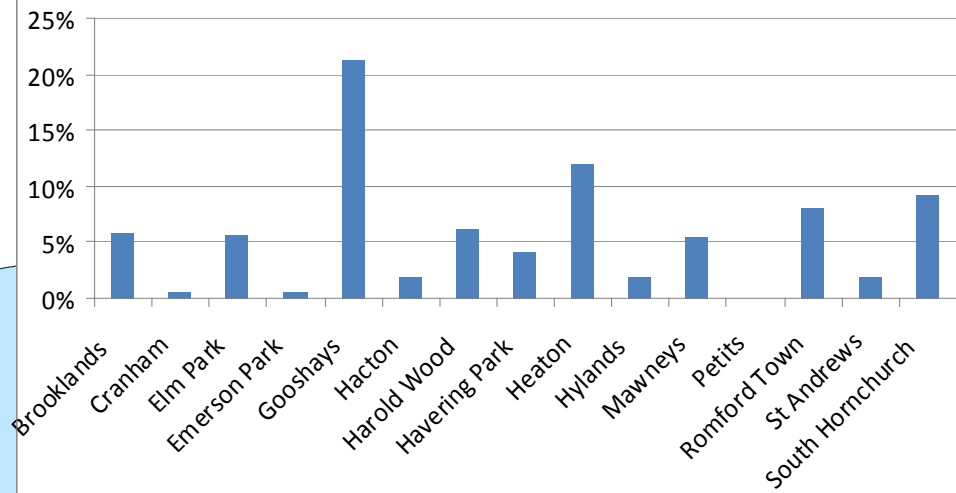


Based upon the Ordnance Survey mapping with the permission of the Controller of Her Majesty's Stationery Office (c) Crown copyright. Unauthorised reproduction infringes Crown Copyright and may lead to prosecution or civil proceedings. London Borough of Havering LA100024327



Findings from Matrix

Resident Ward



THE GOVERNMENT'S CRITERIA

The identifying criteria...

The result that triggers payment...

Page 8

Crime &
ASB

[Empty box for identifying criteria]

In the last three consecutive school terms **all children** have:
a) < 3 fixed term exclusions AND
b) < 15% unauthorised absence

Any child not on the school roll previously has moved into school, PRU or alternative provision AND meets the criteria above

Households with 1 or more under 18 year old with a proven offence in the last year

AND/OR

Households where any member has 1 or more ASB order, injunction or contract, or the family has been subject to a housing-related ASB intervention in the last year

A reduction of at least 1/3 in proven offences by all under 18 year olds in the last 6 months (compared to the average from the previous 6 months)

A 60% reduction in reported ASB incidents (or breaches of ASB intervention) over 6 months.

Work

If a family meets the 'Education' and 'Crime & ASB' criteria we can then check if any adult in the family is on DWP out of work benefits

If a family meets all 3 criteria, they must be included on our list.

An adult in the household volunteers for the Work Programme or ESF Provision

OR

For families not on ESF /Work Programme, an adult formerly on out of work benefits enters continuous employment (for 26 weeks if previously on JSA or 13 weeks for other benefits) [This is an alternative to meeting the other criteria]

Local
Discretion

If a family meets less than three of the criteria above we can use local discretion to add them to our list. DCLG advise that we could consider children on CP plans, families with frequent police call-outs or arrests or health problems.

There are no PBR criteria relating to the local discretion factor.

The Local Discretion criteria for Havering have been determined through the 'Top 100 Families' identification process. Our priorities locally are domestic violence, mental health, substance/alcohol misuse and housing issues.

Per Family	Upfront funding		Results based payment available	
	Year	%	£	%
1	80	3,200	20	800
2	60	2,400	40	1,600
3	40	1,600	60	2,400

9 Work Strands

PILOTS

ESF PROGRAMME

OUTCOME & EVALUATION
FRAMEWORK

REINVESTMENT STRATEGY

WHOLE SYSTEM
REDESIGN

COMMISSIONING

PARTICIPATION

WORKFORCE
DEVELOPMENT

COMMUNICATIONS PLAN

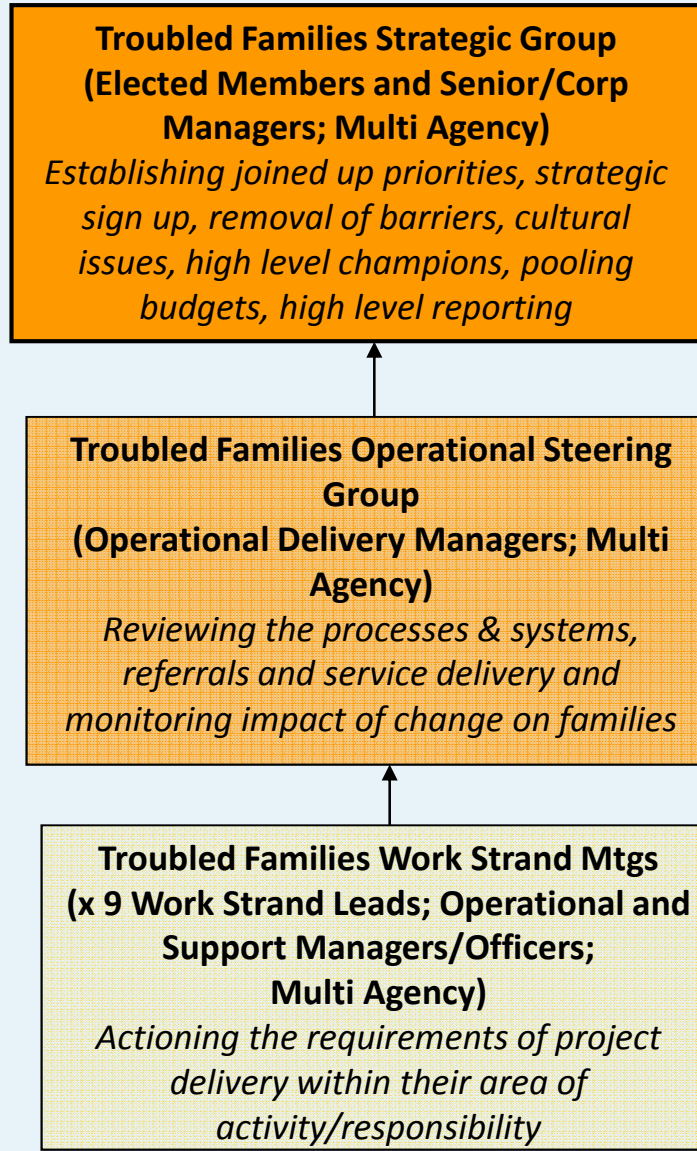
Benefits

- Aligning work programmes within Council
- Focus on priority families issues
- Impetus and capacity to get 'own house in order'
- Systemic and sustainable change; Legacy

Challenges;

- ESF Programme
- PbR Criteria
- Partnership buy in and momentum

Governance



Children's Transformation Board

CAMHS Partnership Board

Children's Trust Board

Community Safety Partnership

Total Place Board

Crime and Disorder Committee

Harold Hill Ambitions Board

Rainham Compass Board

What next?

- TF partnership conference/workshop
- Develop detail in works strands and identify leads
- Confirm intervention for Year 1 cohort of families
- Governance structure and operational group

This page is intentionally left blank